



symptoms of confinement



wellington – lisbon return : 2021 / 01 > 03

part two : scatter

day 1: Wed 13.01.2021

evening head ache

hot flushes at night

slightly itchy eyes

prelude : to absentia /

( i've been away ) the  
movement of information  
has been altered by time or  
recreated by the familiarity  
of place .. objects/space have  
distorted, reconfigured -  
stretched.

part one : collapse /

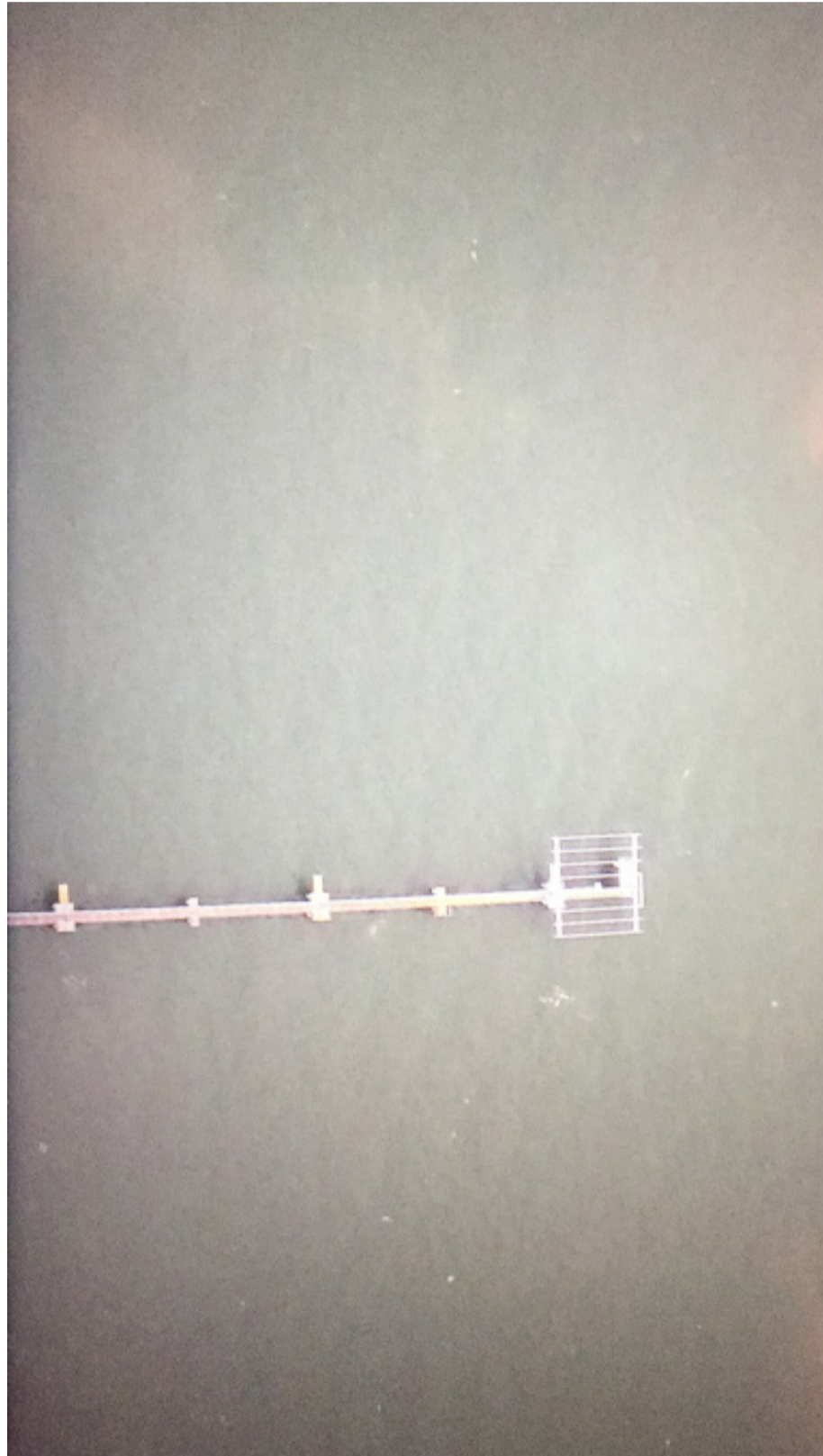
. the circumstances much  
different this time as the effect  
still familiar .. the familiarity  
of the everyday . objects,  
places, things all suspended in  
a fluid state of tangibility. time  
struggles to move .

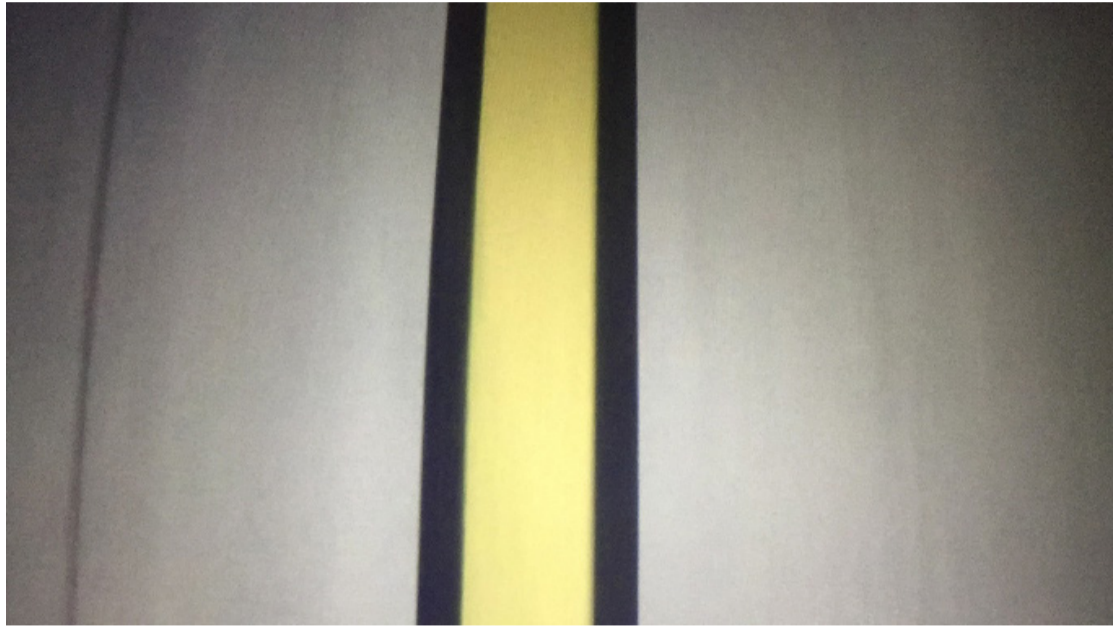
part two : contemplation /

part three : ... / malaise ;  
expiration





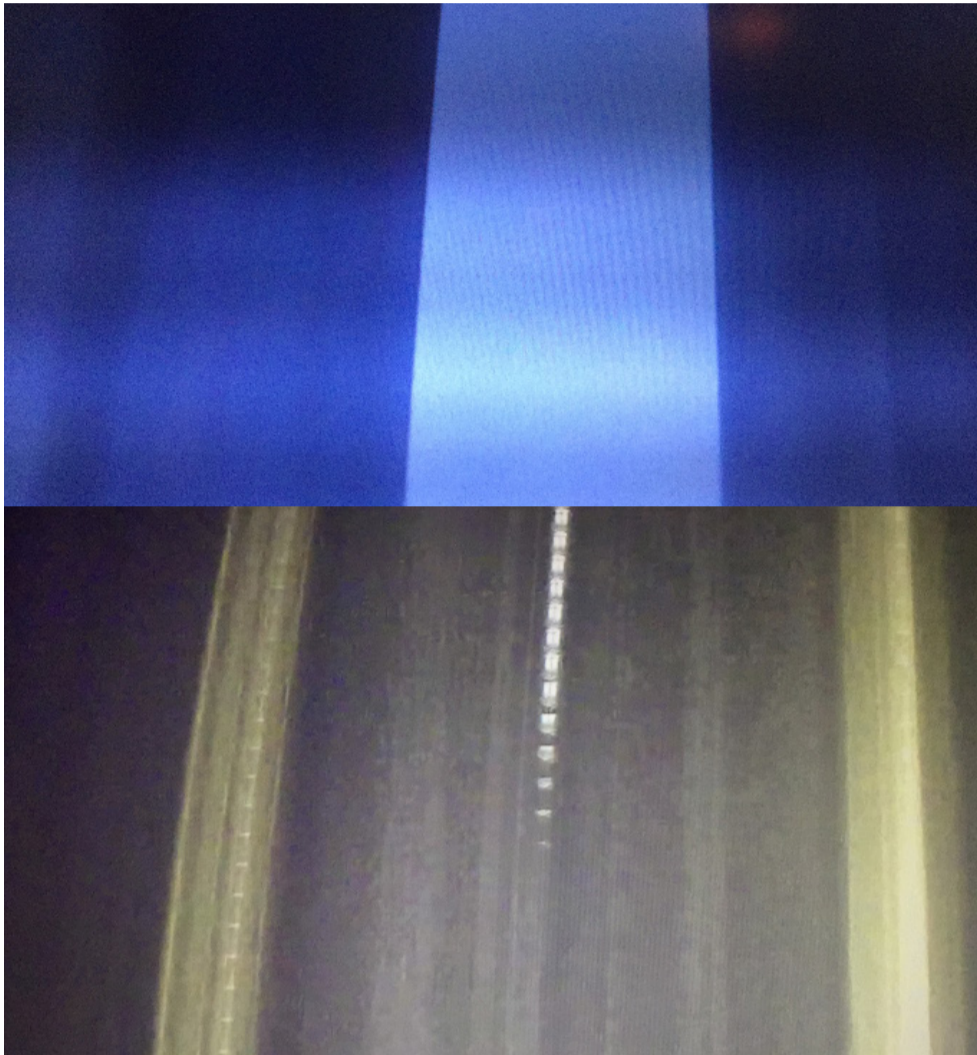




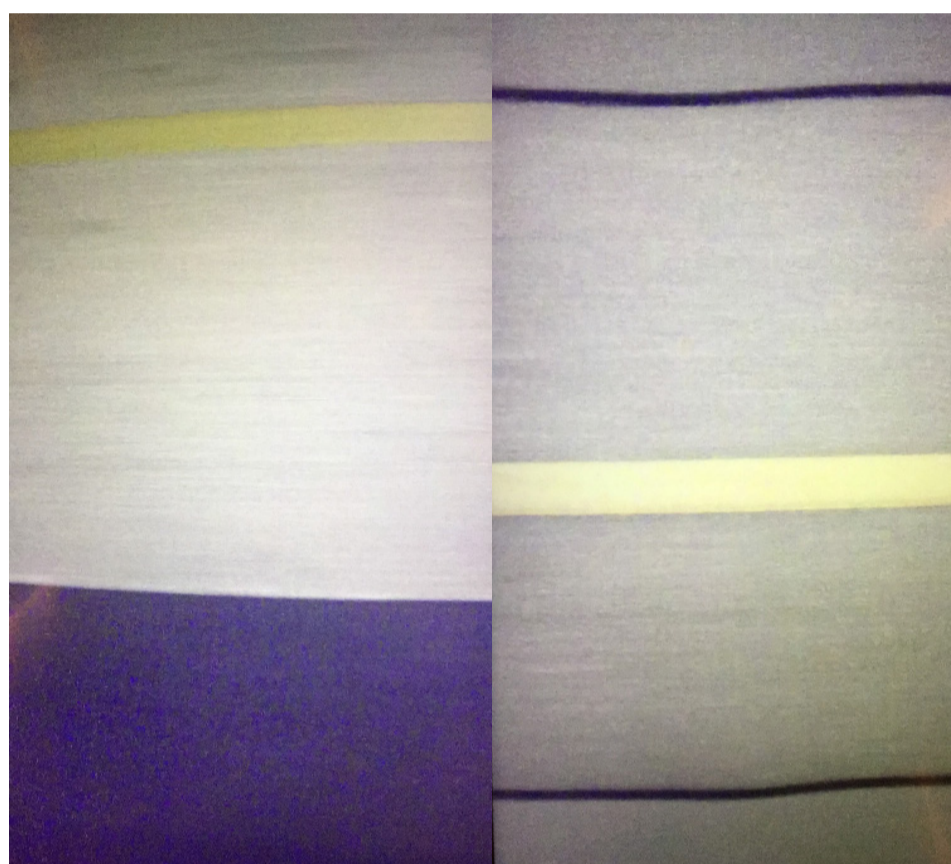


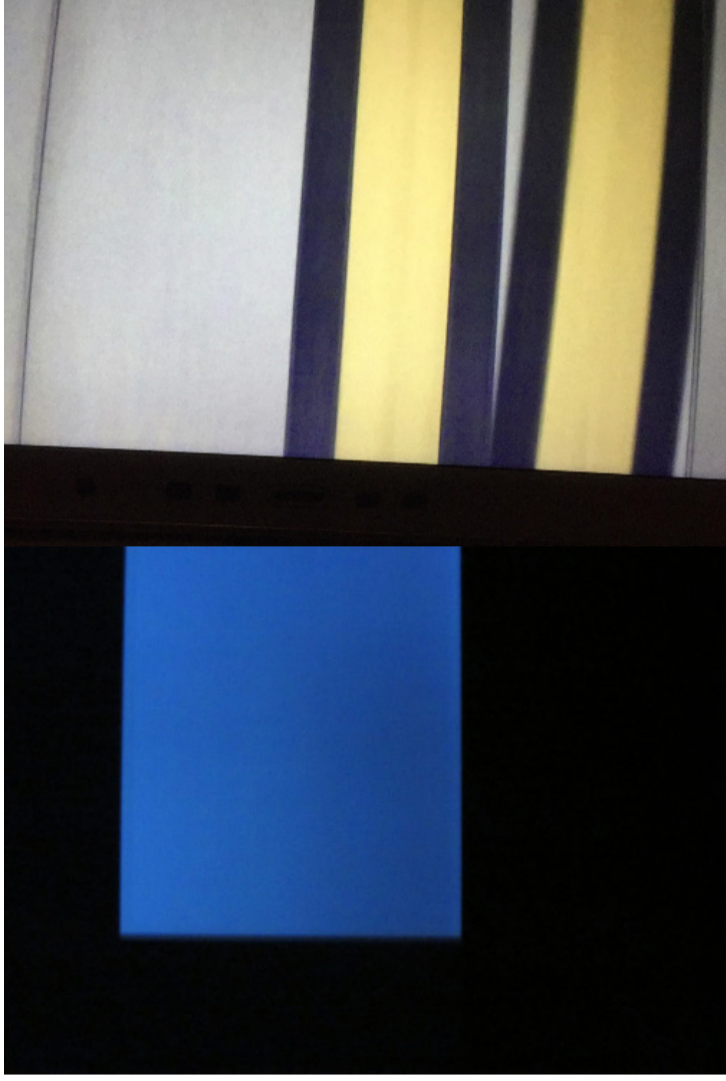




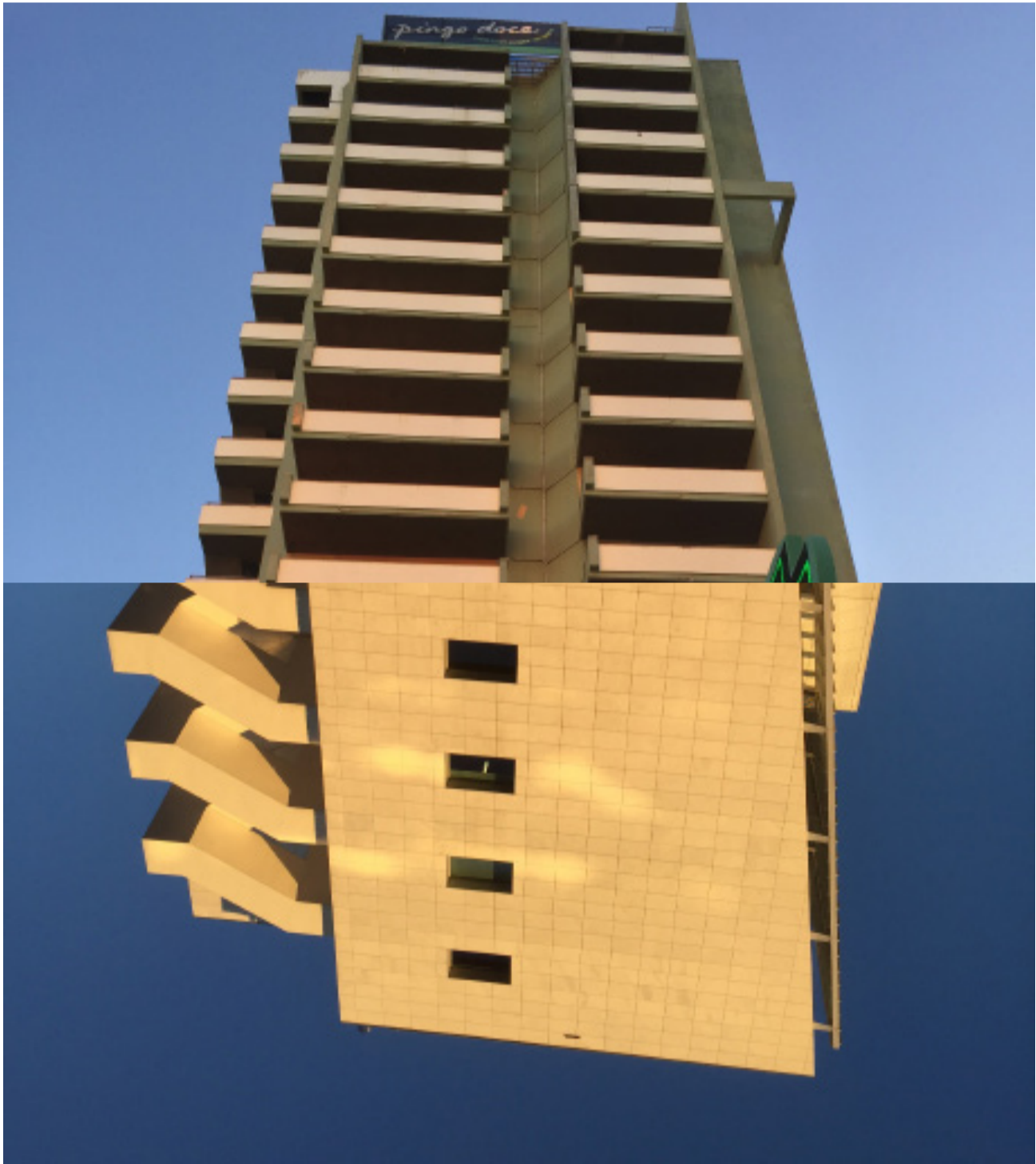


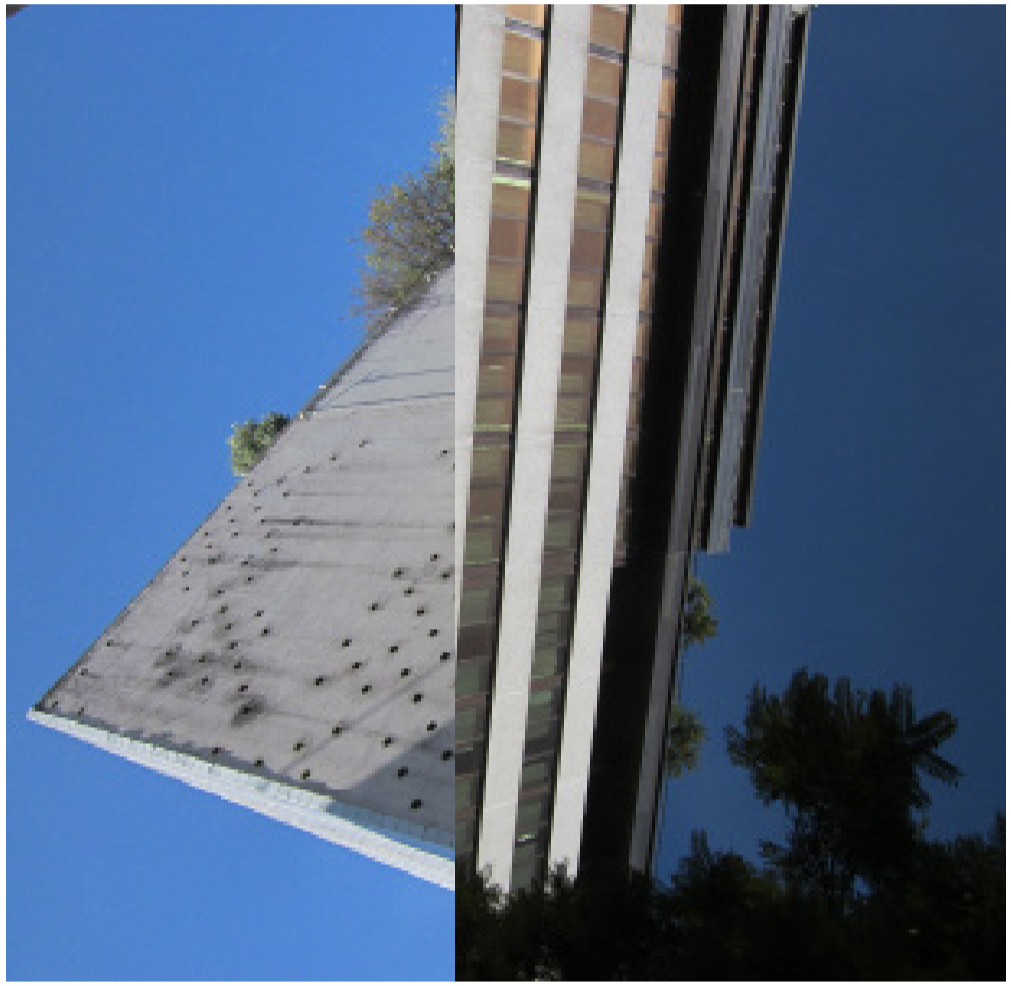








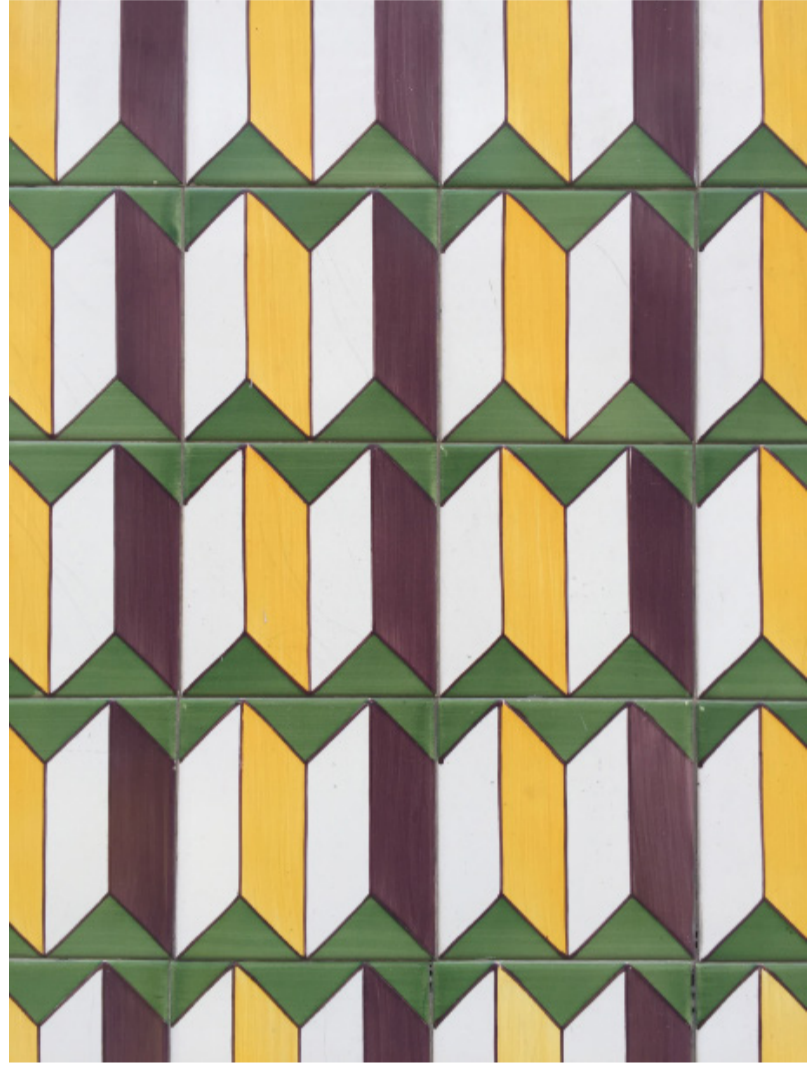






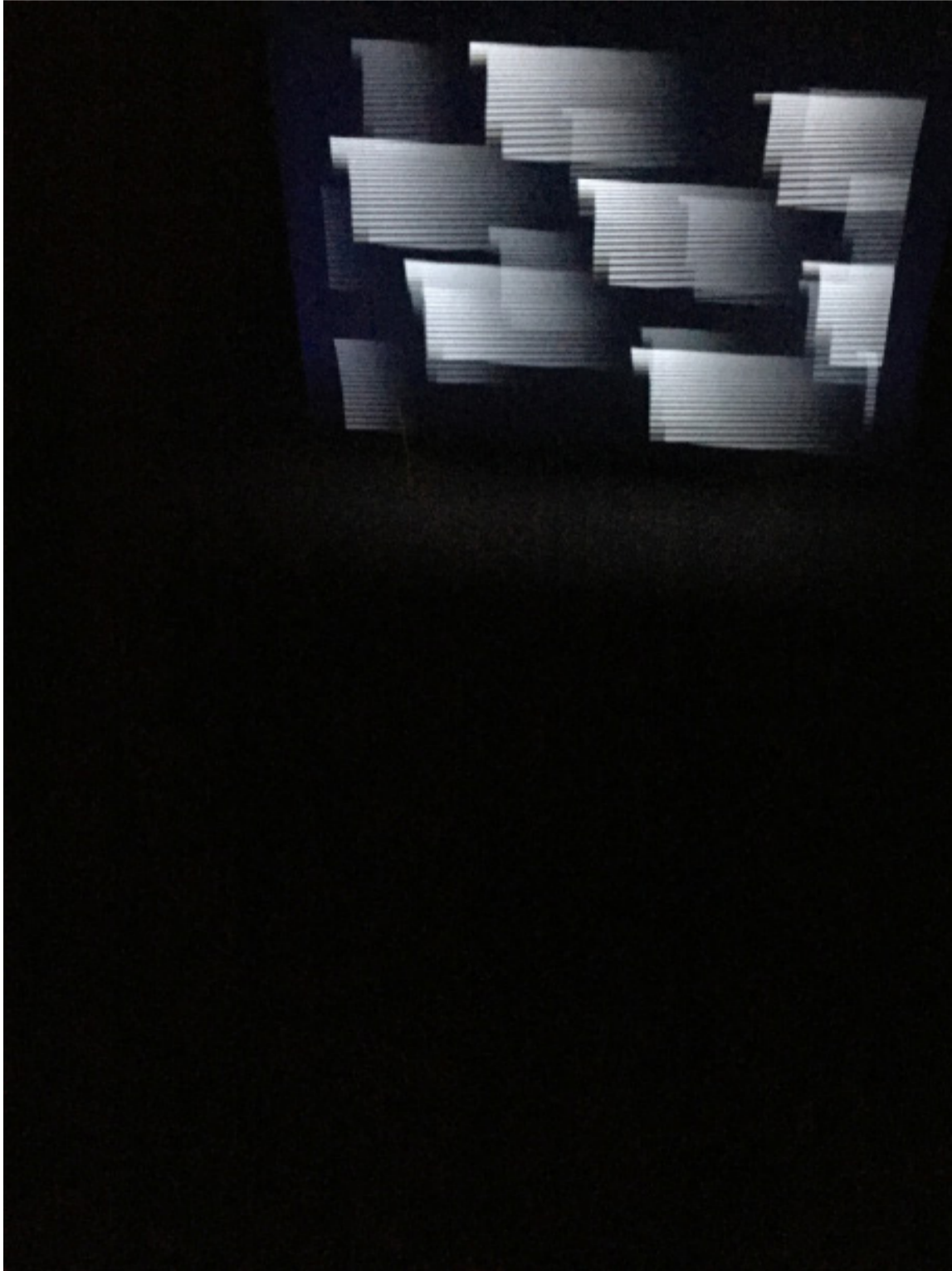


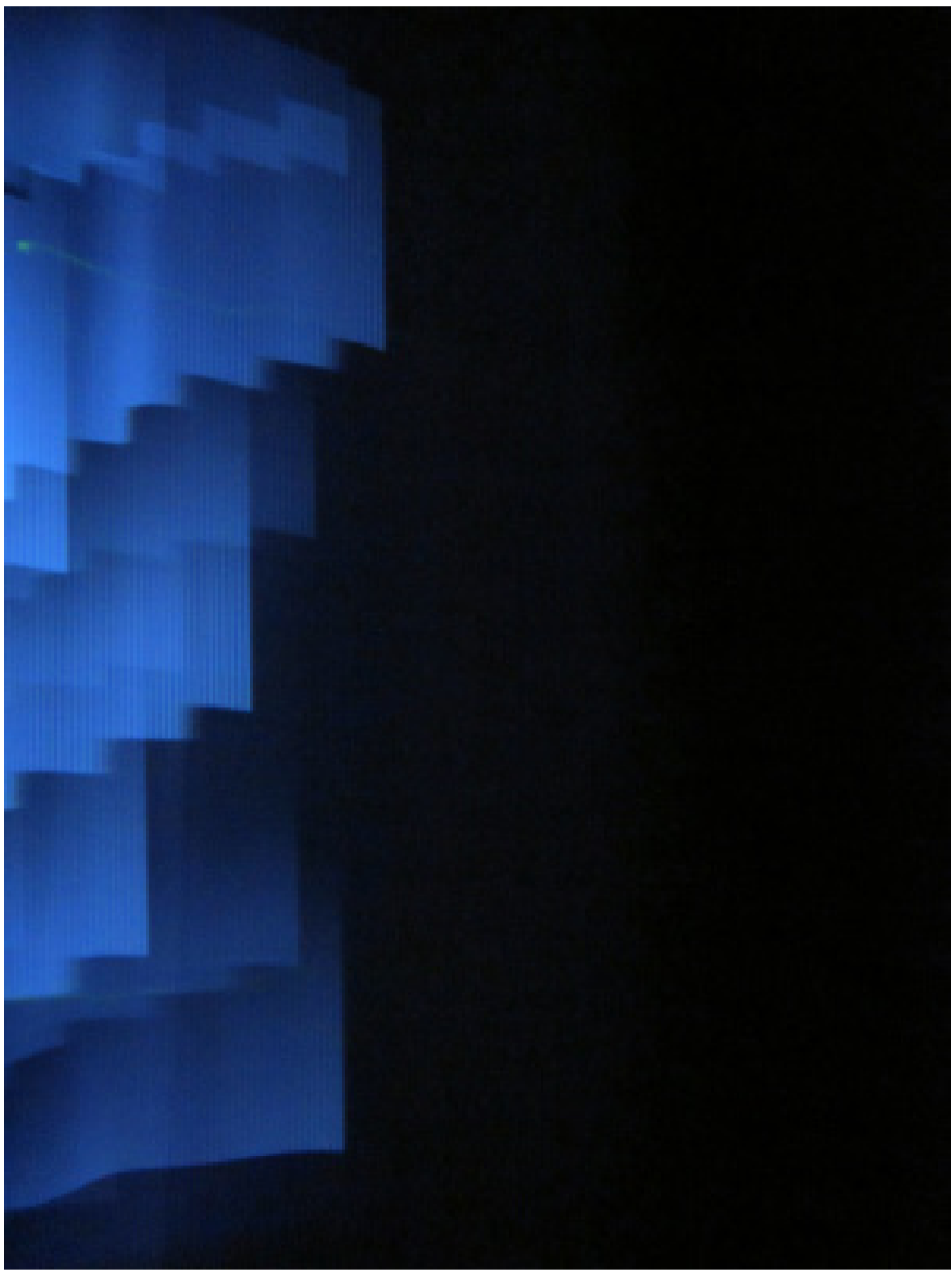
wed 13.01.2021 / evening head ache, hot flushes at night, slightly itchy eyes



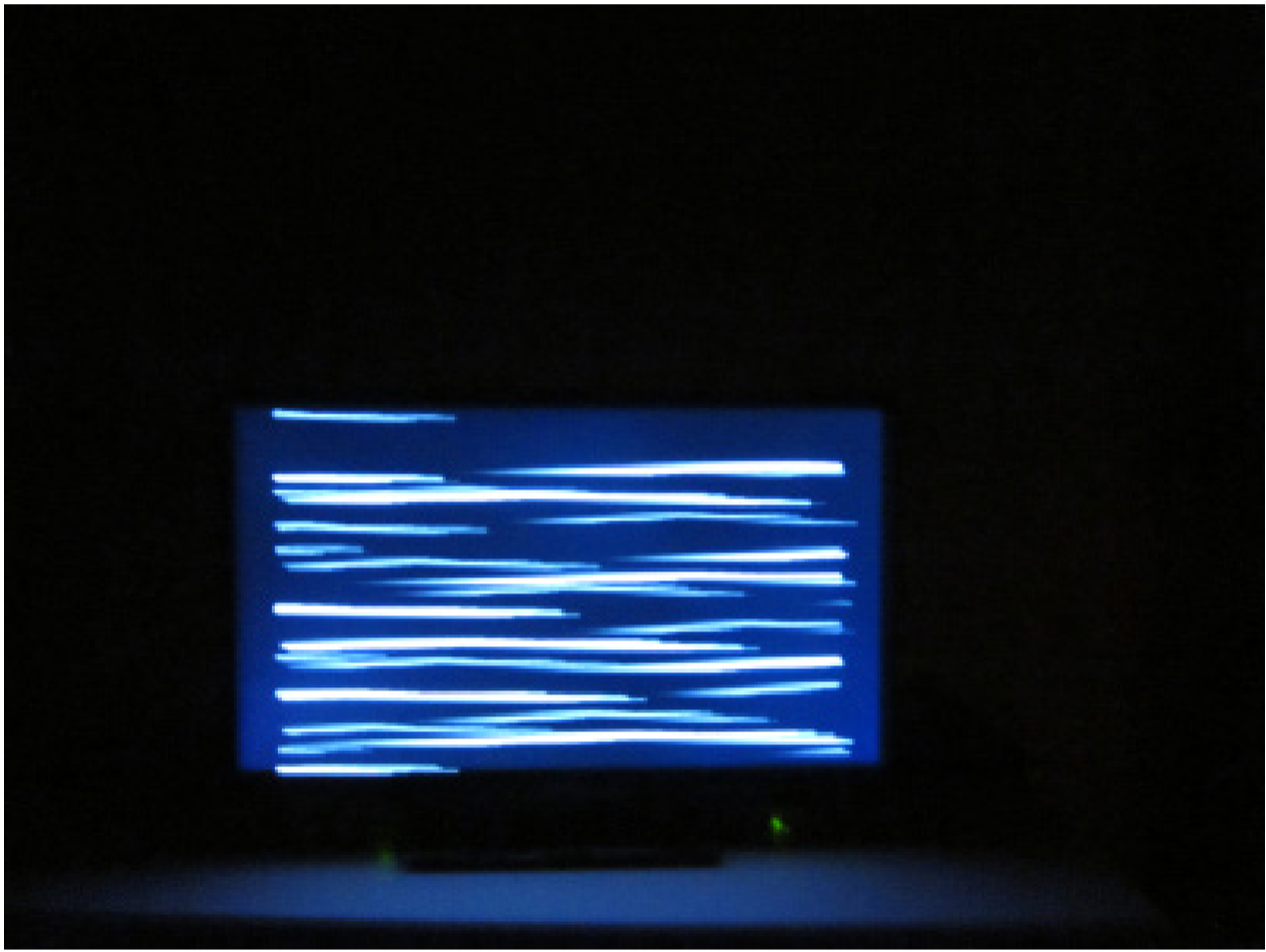


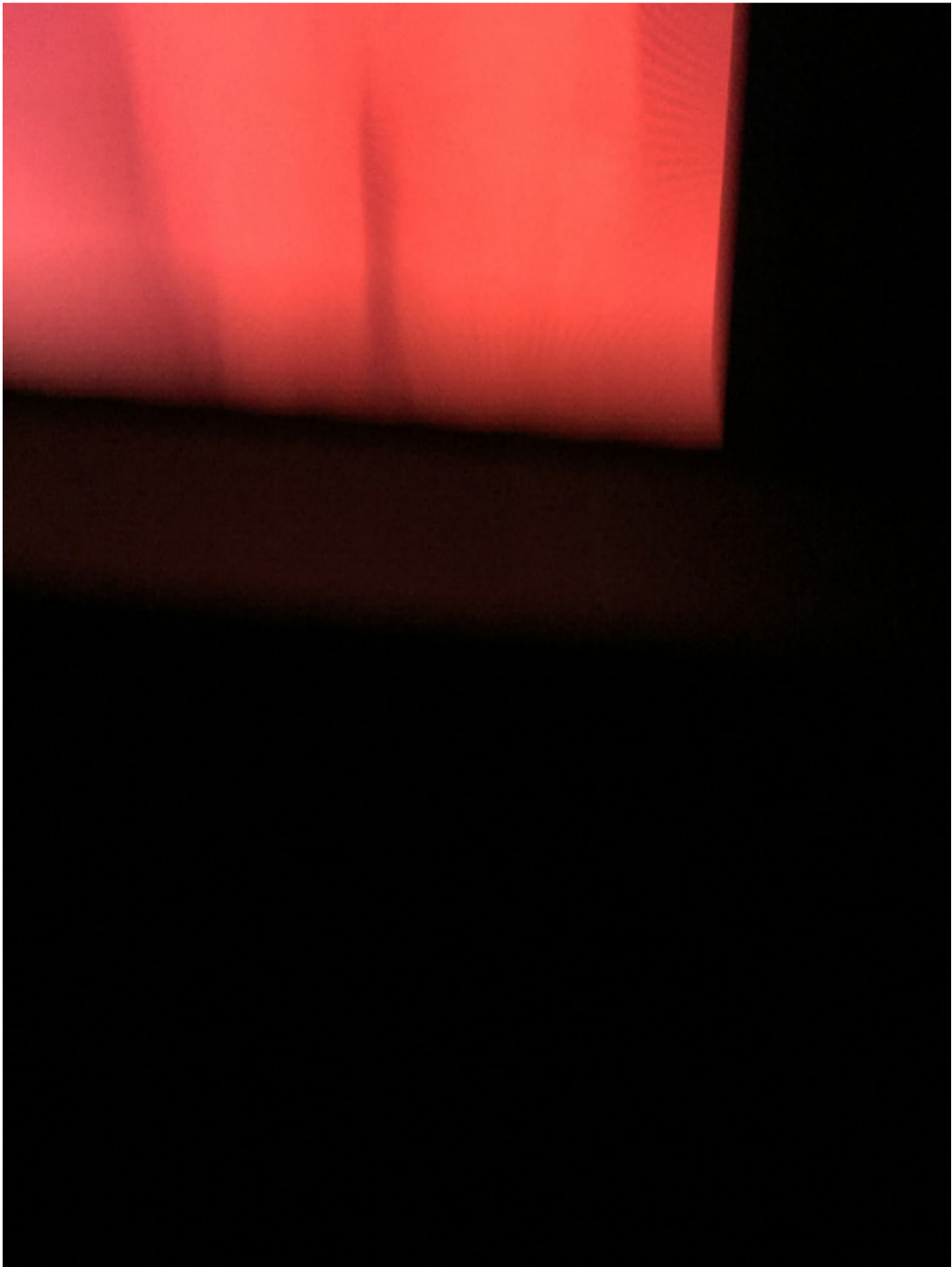










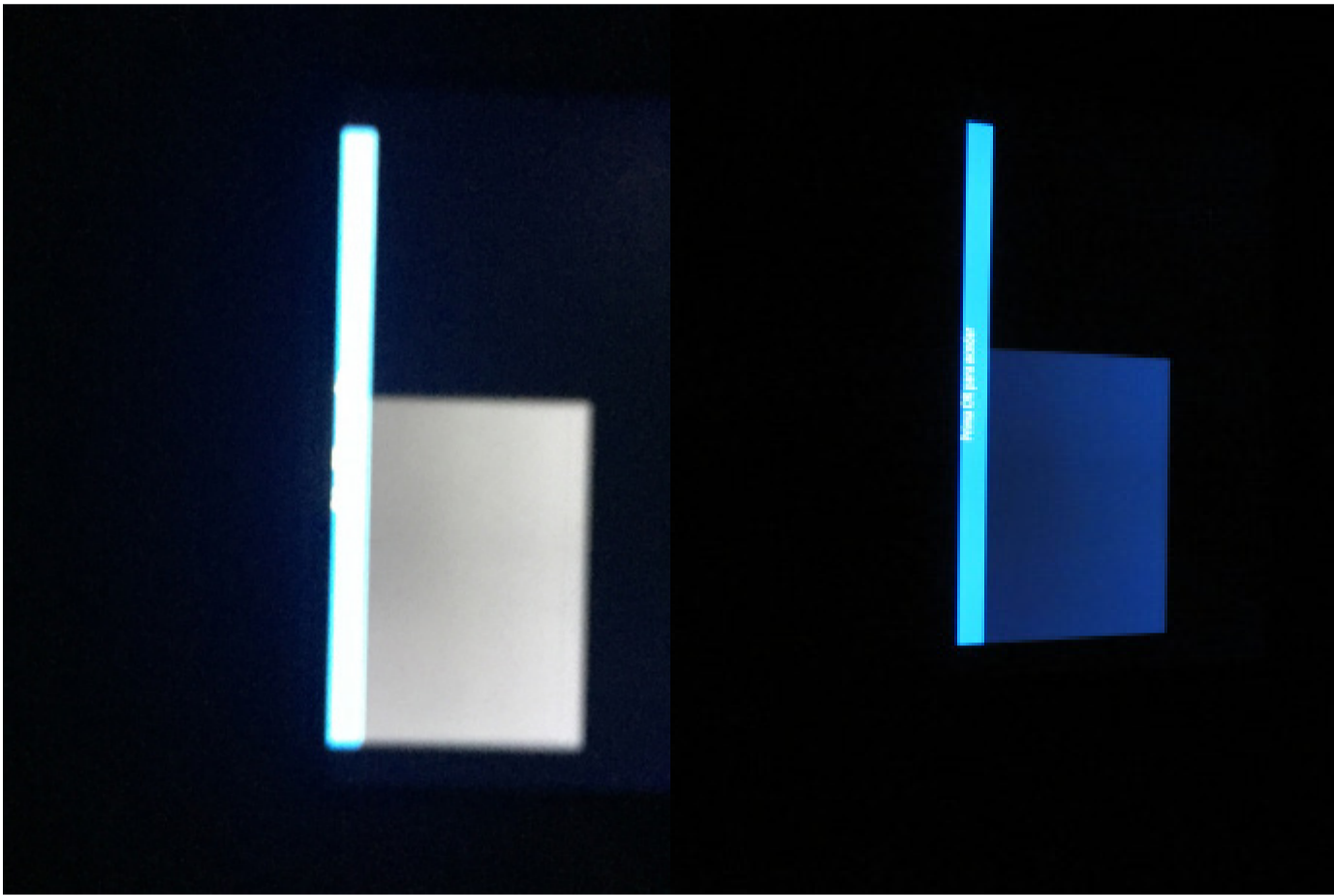


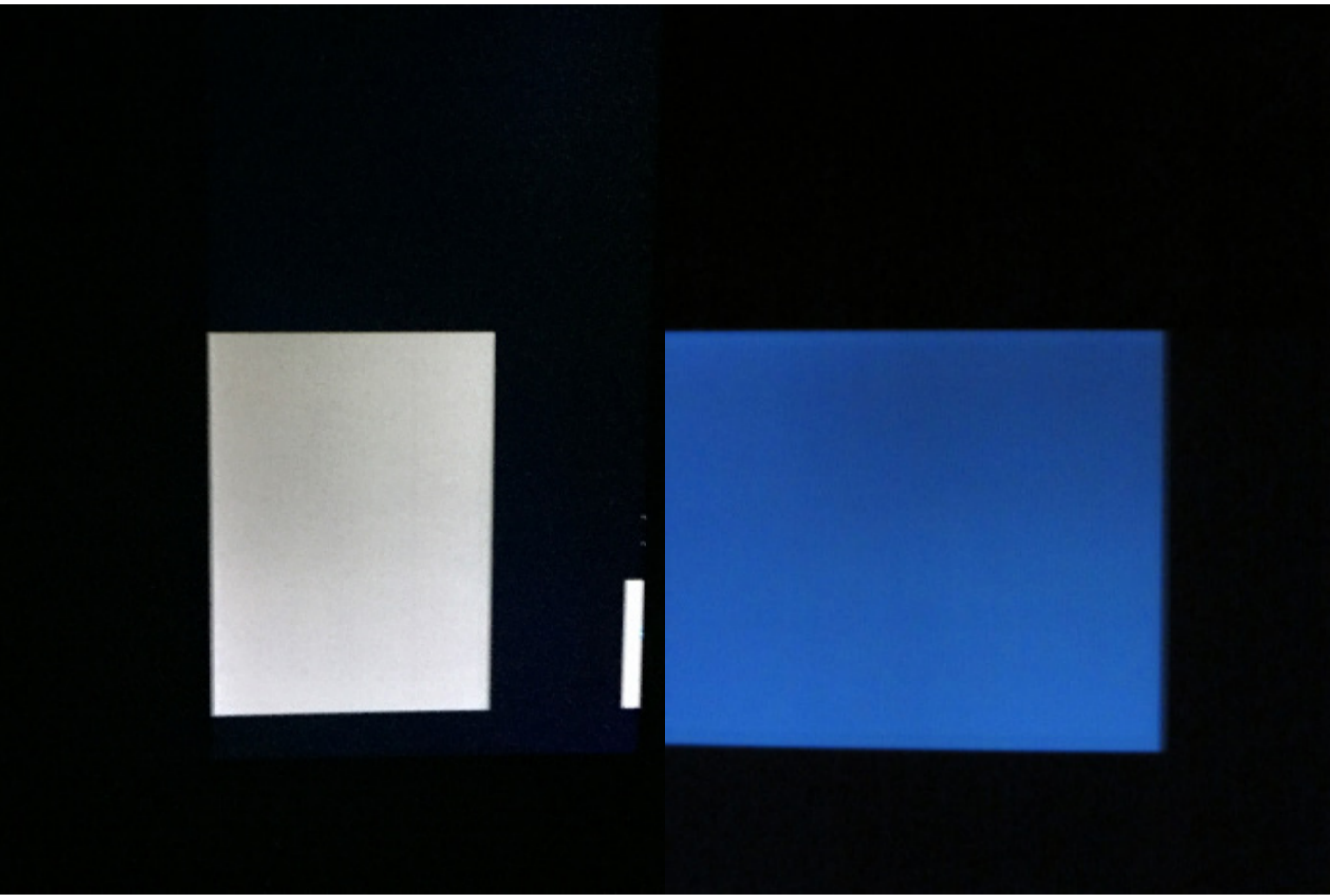
































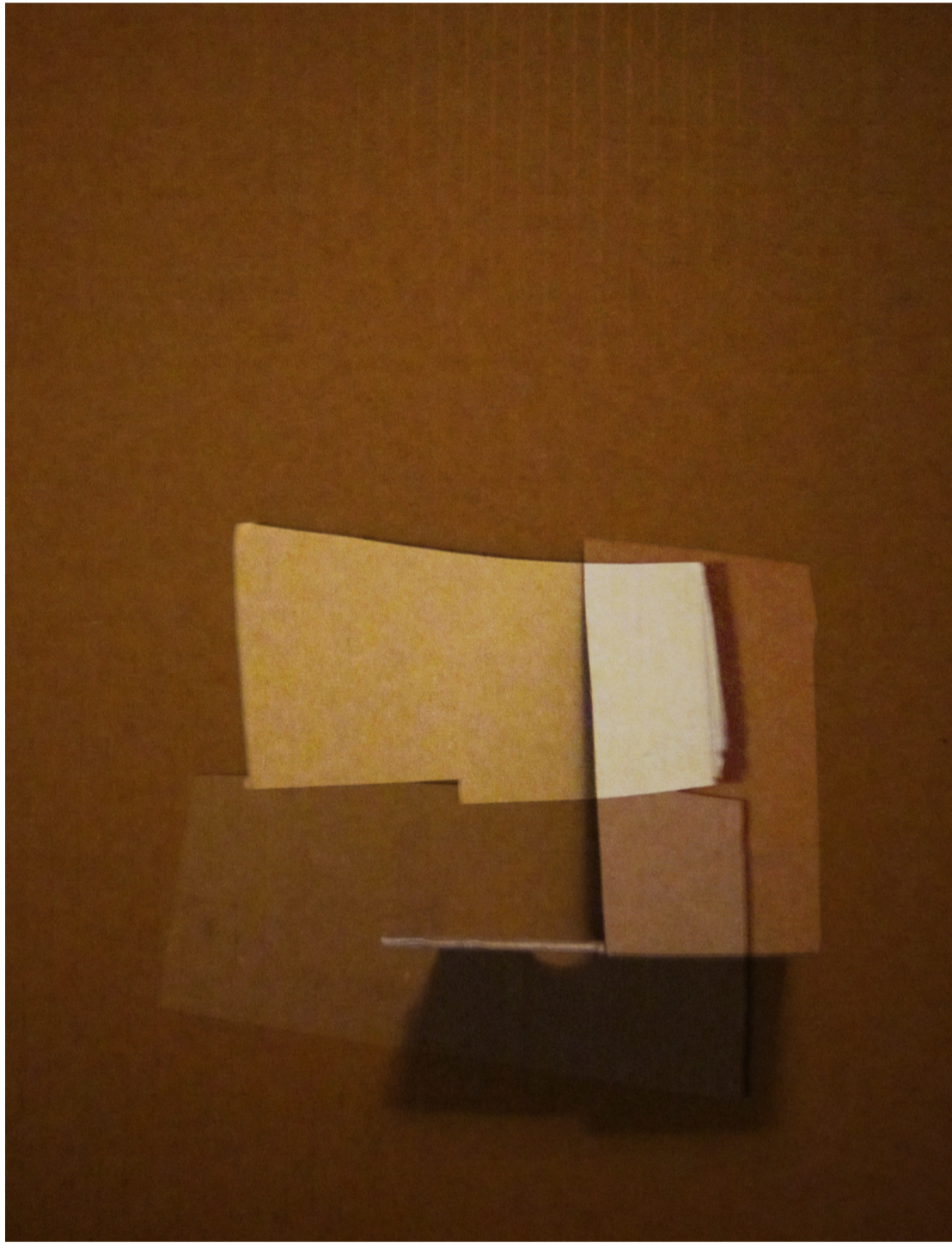




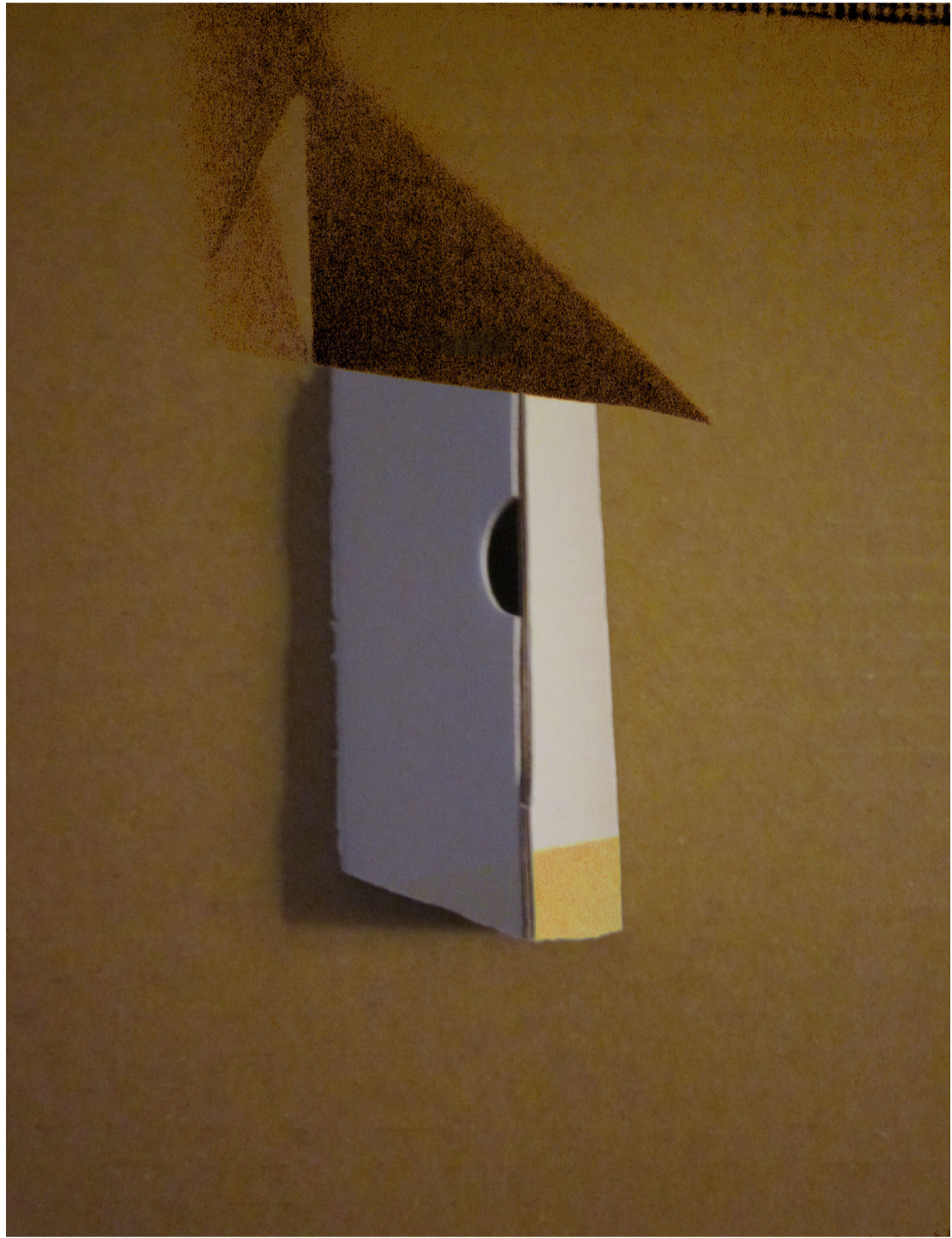






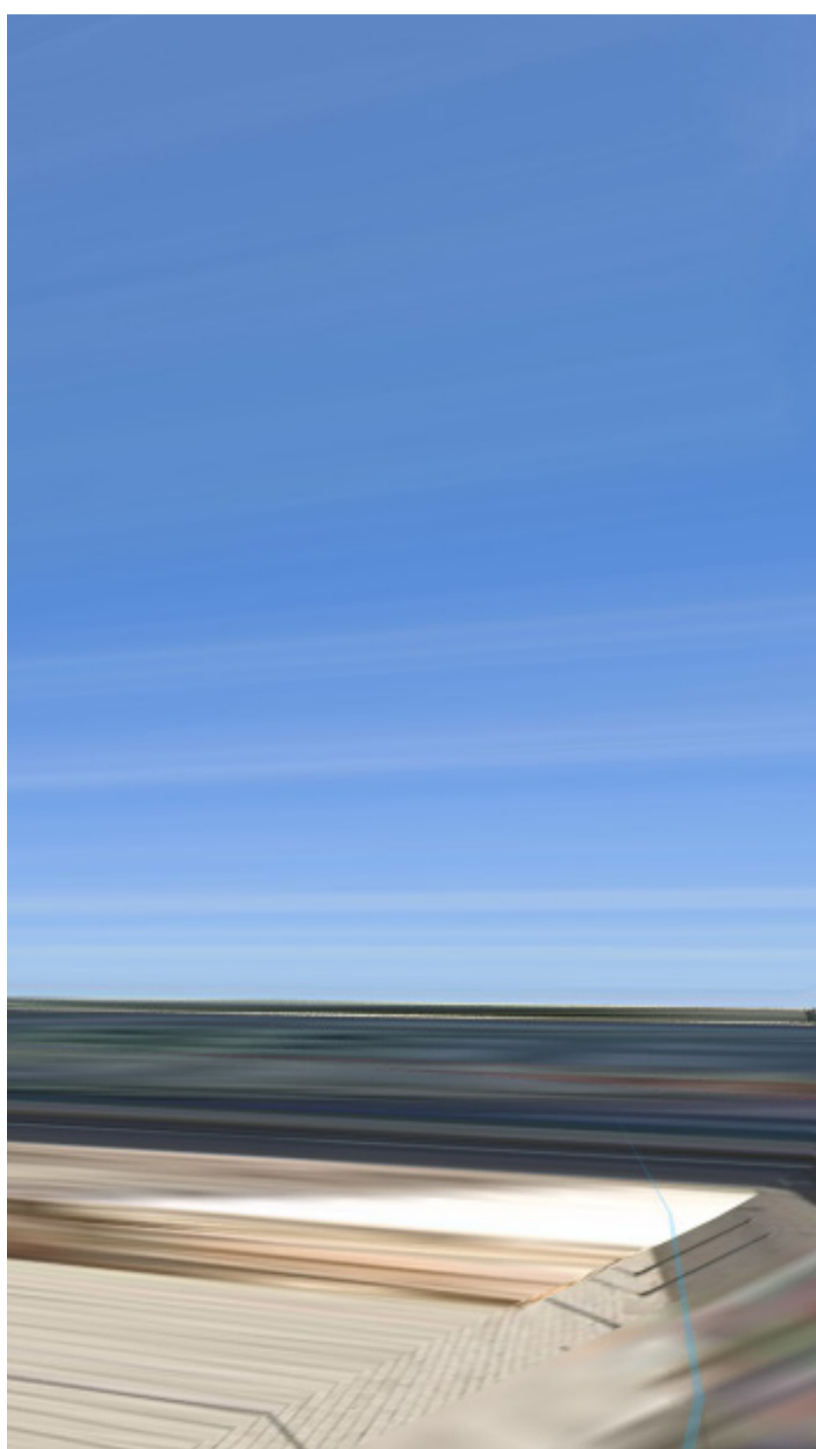










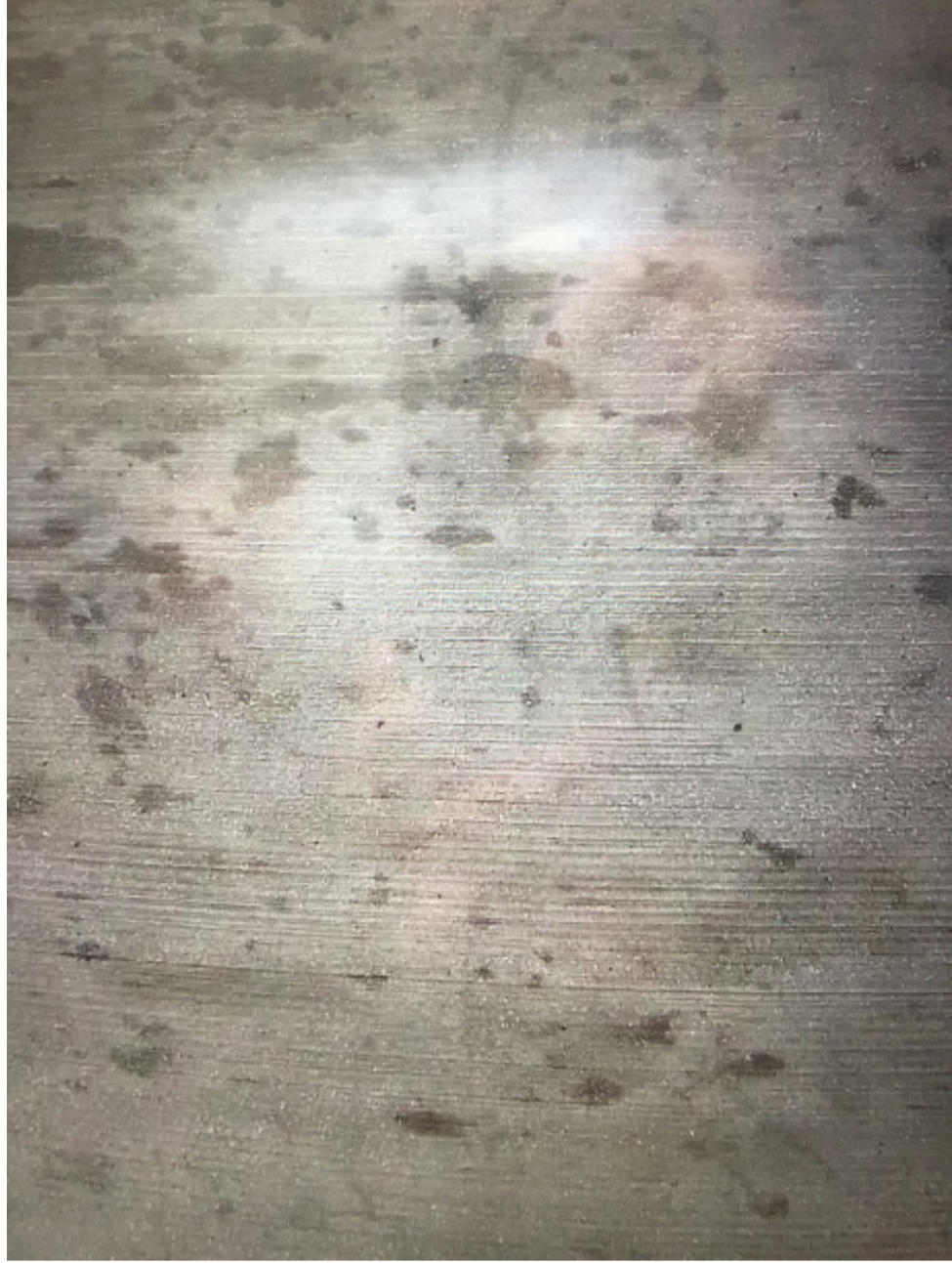


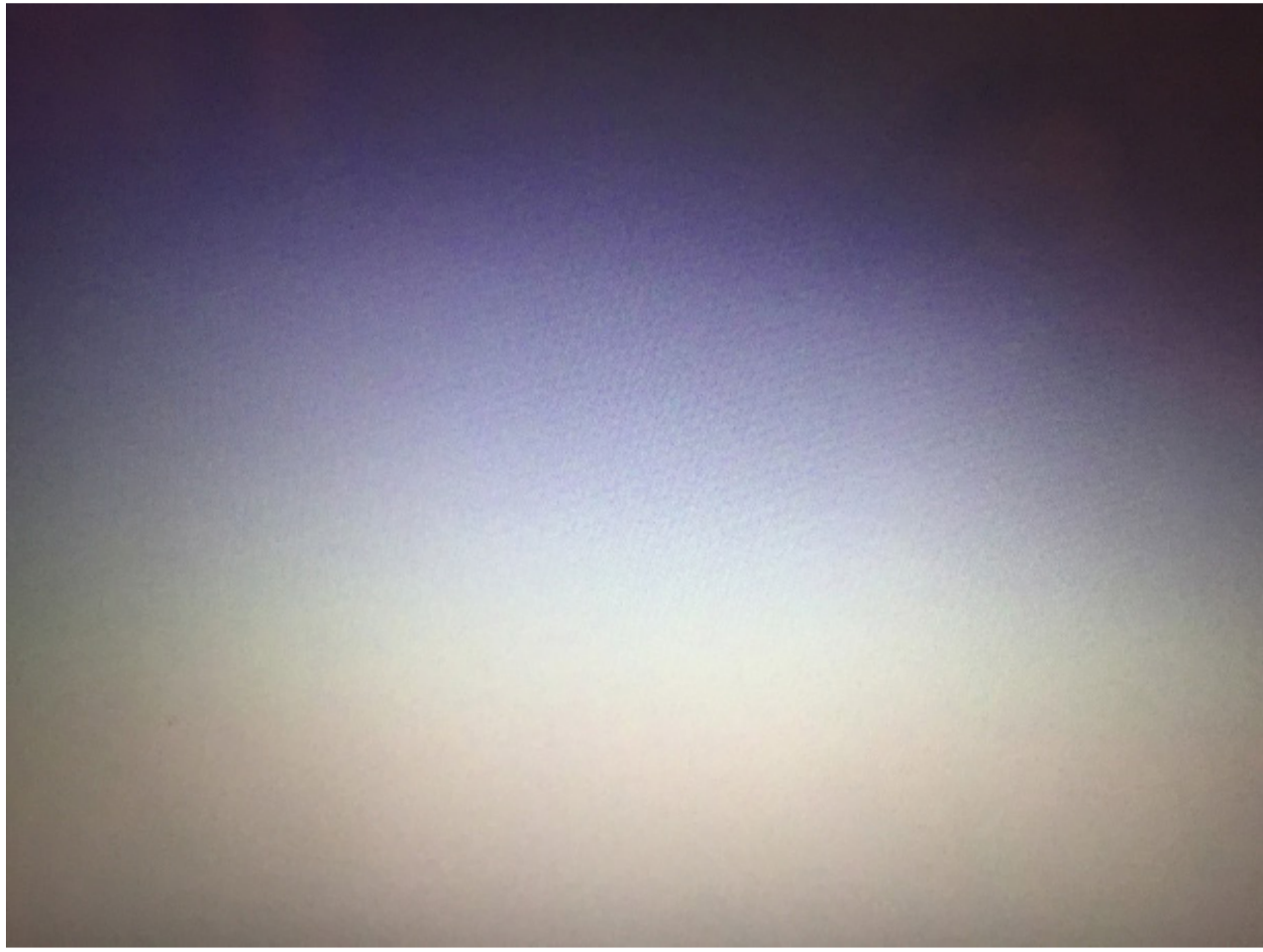






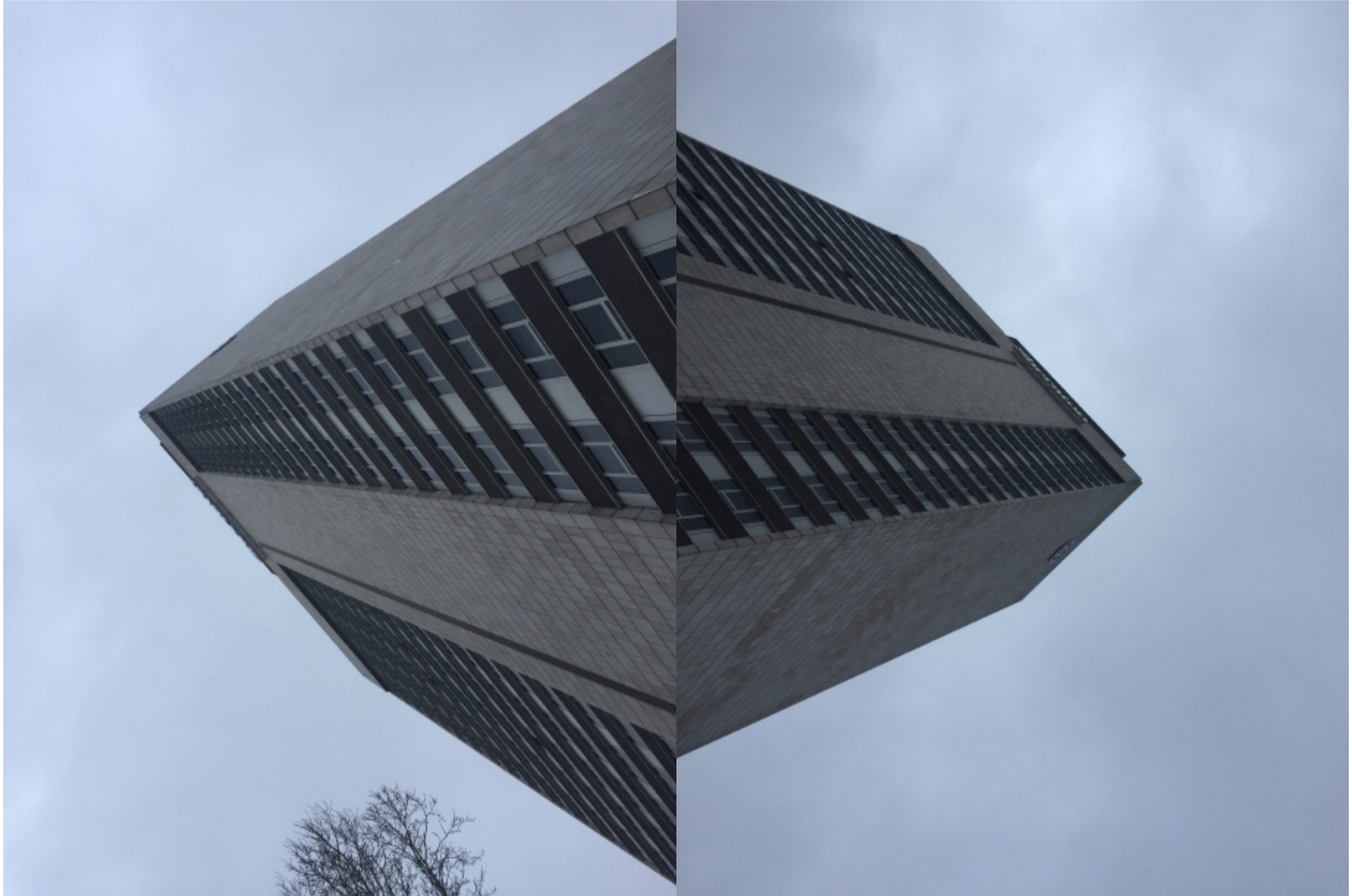






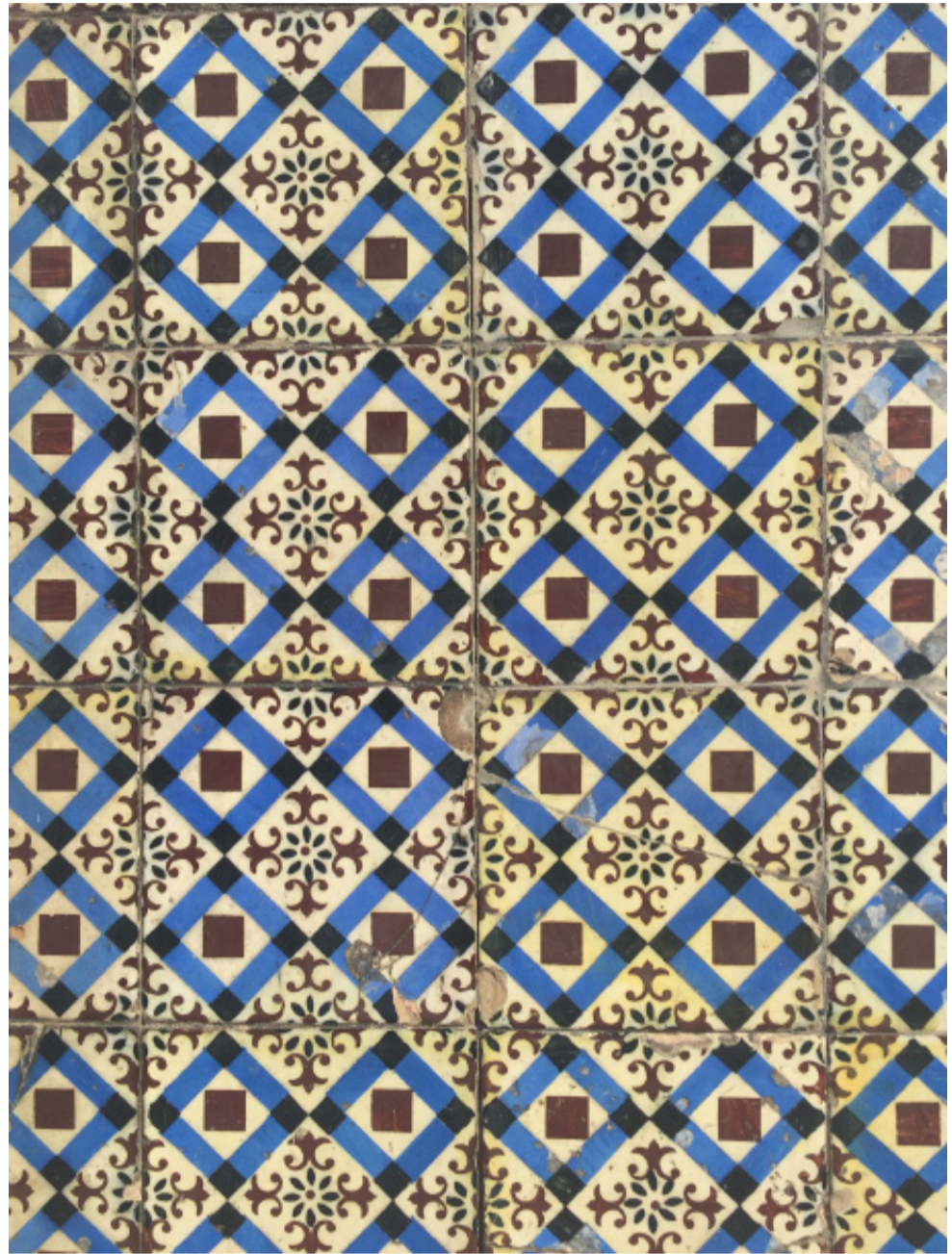
























cold hands / toes / nose . extremities



slight headache upon wake



slightly crusty eyes upon wake  
itchy throat – dry cough 1x - midday





08.00 : 35.9°

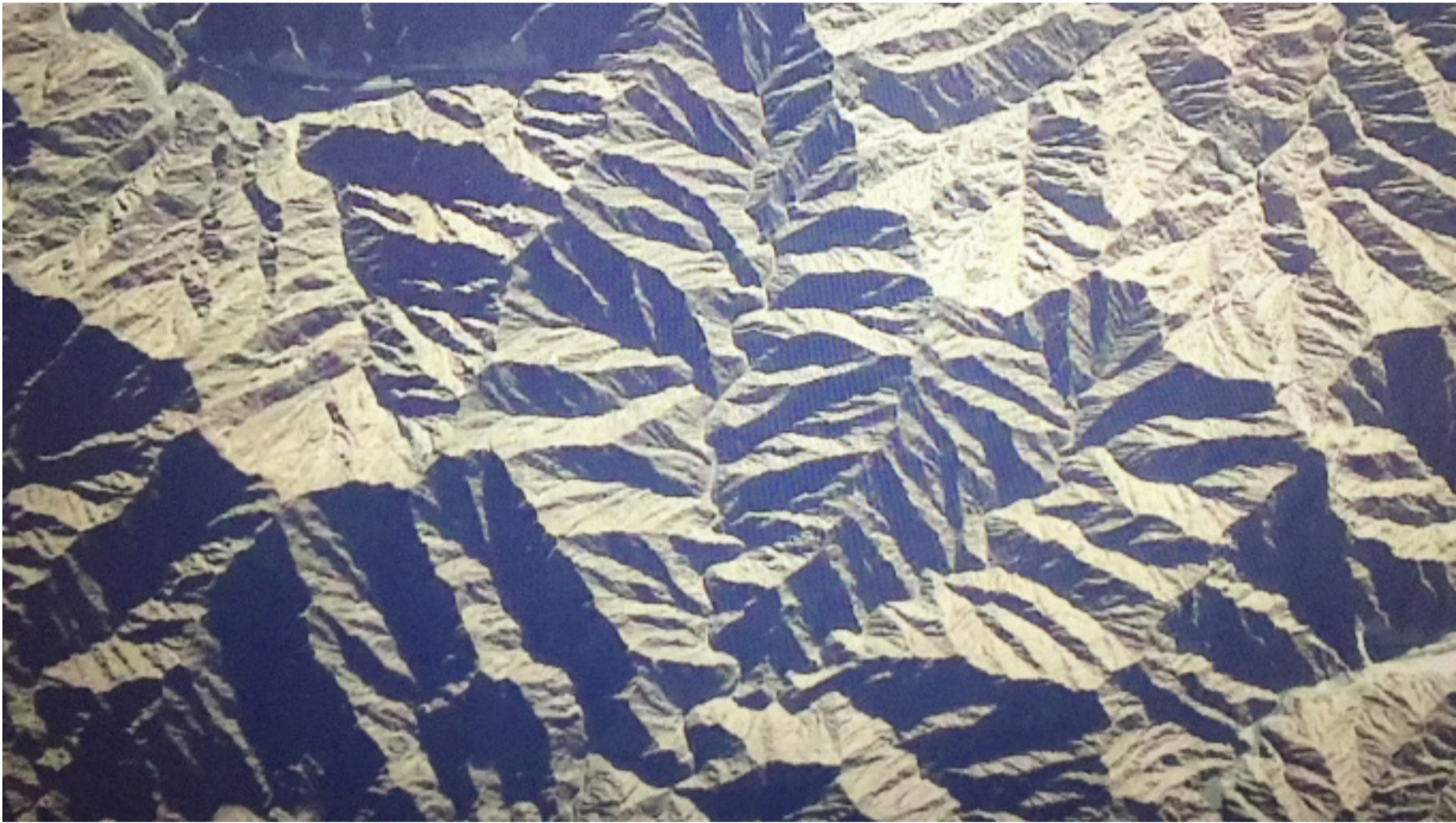
13.15 : 36.1°

20.20 : 37.0°









dryness in nasal passage waking up

10.00 -: 36.0°

14.00 -: 36.4°

17.00 -: 36.4°









